

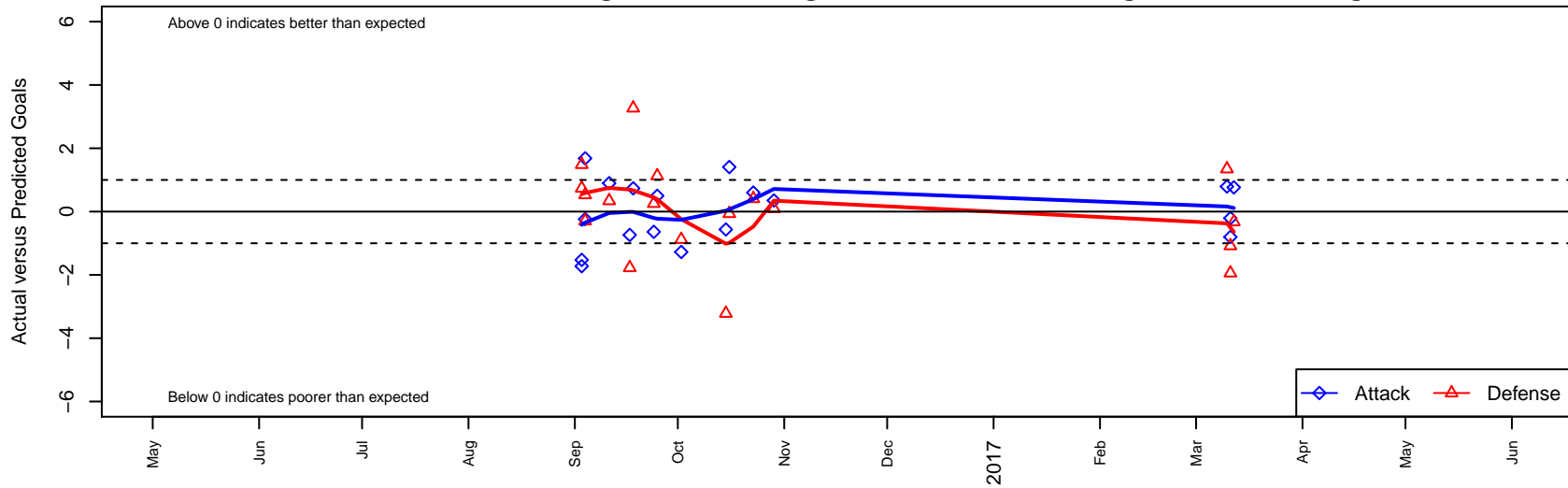
Real So Cal White B98

, CAS
 B98 total strength=1852
 attack=65.32 defense=22.53
 fall league = SCDL FI1 U19

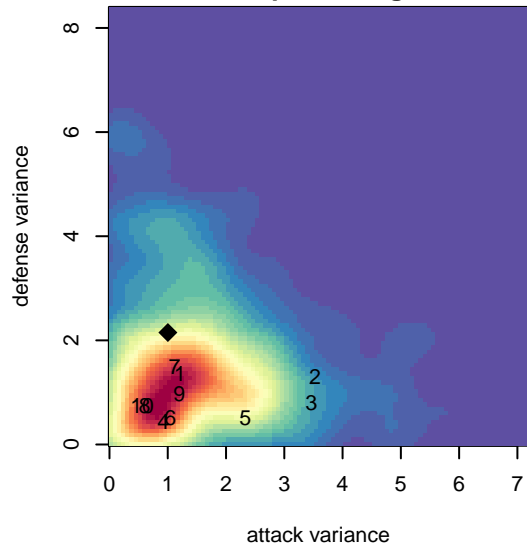
alt names used:
 REAL SOCALRSC WHITE99/98
 Real So Cal B98 White
 REAL SOCAL RSC WHITE 99/98 (CAS)

Venues played:
 2016 NHB Cup Flight 1
 2016 SCDL FI1 U19
 2016 NV Players Showcase U-19 Tropicana U

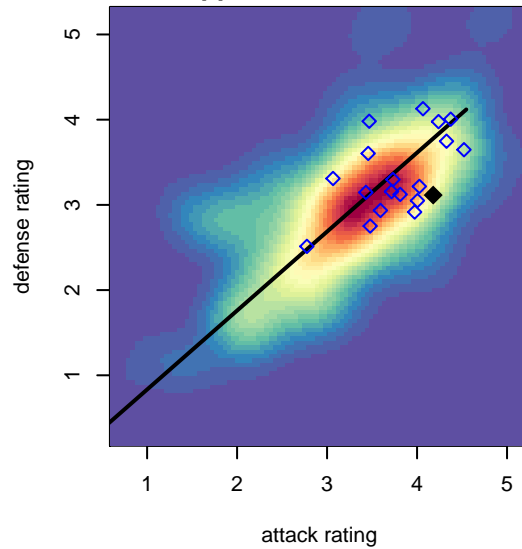
Real So Cal White B98
 Dots are actual minus expected GF (blue circles) and GA (red triangles).
 Blue line is smoothed change in attack strength. Red is smoothed change in defense strength.



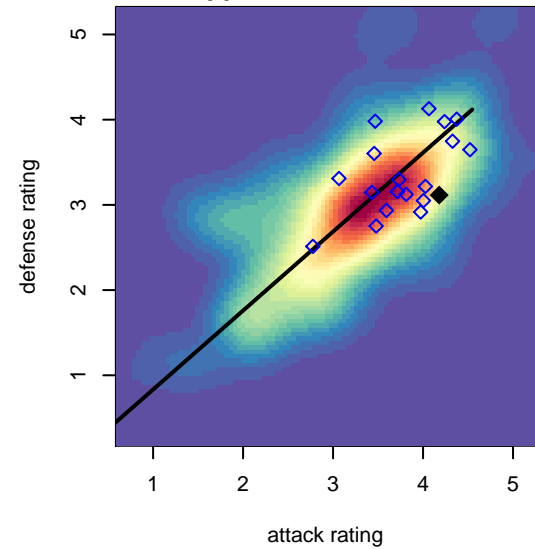
**attack and defense variance (black dot)
relative to other teams
and top 10 in region**



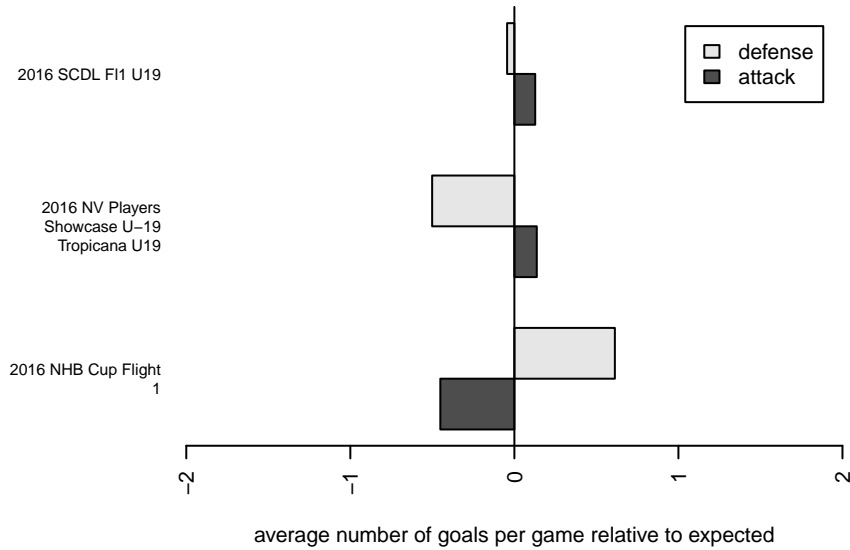
**attack and defense rating
relative to others at age
and all opponents in last 13 months**



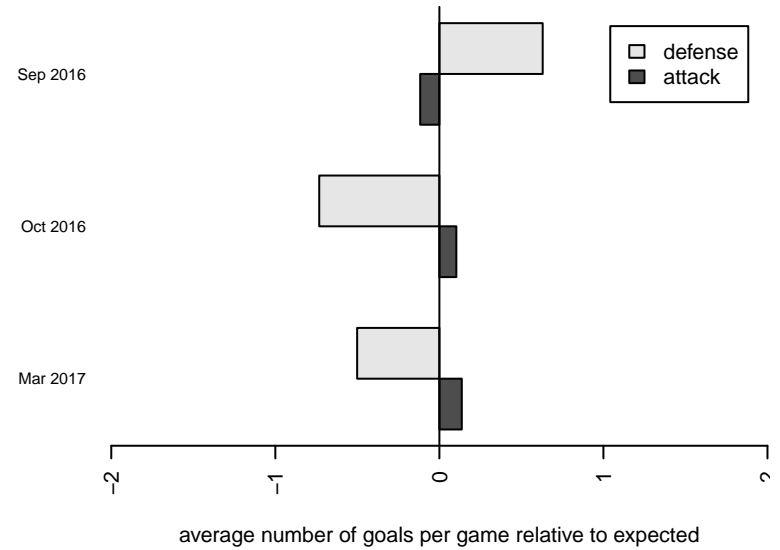
**attack and defense rating
relative to others at age
and all opponents in last 13 months**



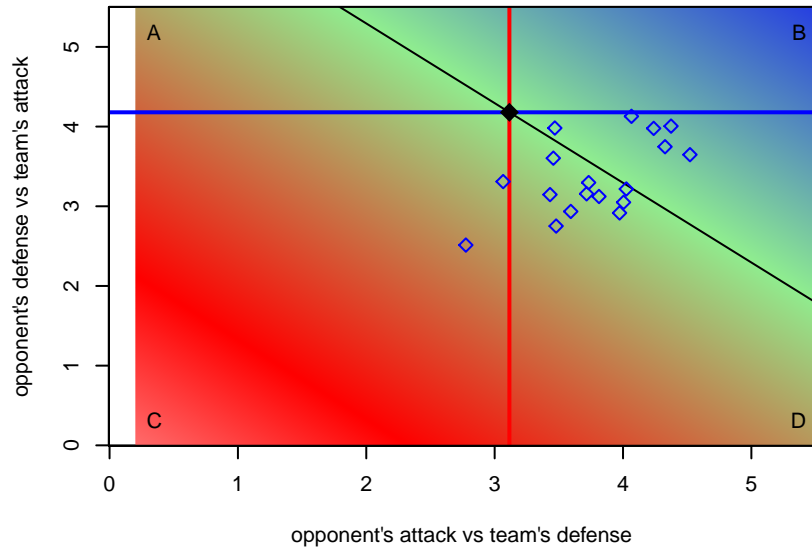
Performance relative to 13 month average



Performance relative to 13 month average



Distribution of opponents
 Red = Lose zone, Blue = Win zone, Green = Even
 Black line separates win/lose zones



lot. A=Neither has attack advantage, B=Opponent has both attack and defense advantage, C=Opponent has both attack and defense disadvantage, D=Both have

date	home		away		venue	pred.home	pred.away
2017-03-12	Real So Cal White B98	6	Clovis Crossfire White B98	1	2016 NV Players Showcase U-19 Tropicana	5.24	0.67
2017-03-11	Midwest United Royal B98	4	Real So Cal White B98	1	2016 NV Players Showcase U-19 Tropicana	2.92	1.21
2017-03-11	Real So Cal White B98	1	Scottsdale Blackhawks B98	3	2016 NV Players Showcase U-19 Tropicana	1.80	1.06
2017-03-10	FC Boulder Elite B98	0	Real So Cal White B98	2	2016 NV Players Showcase U-19 Tropicana	1.35	1.21
2016-10-29	Real So Cal White B98	4	Temecula Valley Hawks B98	1	2016 SCDL FI1 U19	3.65	1.09
2016-10-23	San Diego SC Academy Navy B98	1	Real So Cal White B98	4	2016 SCDL FI1 U19	1.41	3.40
2016-10-16	Real So Cal White B98	4	West Coast FC B98	2	2016 SCDL FI1 U19	2.59	1.93
2016-10-15	Pateadores Riverside B98	7	Real So Cal White B98	1	2016 SCDL FI1 U19	3.78	1.56
2016-10-02	CA Rush B98	3	Real So Cal White B98	2	2016 SCDL FI1 U19	2.12	3.28
2016-09-25	Real So Cal White B98	2	CDA Slammers HB B98	2	2016 SCDL FI1 U19	1.50	3.13
2016-09-24	Real So Cal White B98	2	FC Premier White B98	2	2016 SCDL FI1 U19	2.64	2.26
2016-09-18	Real So Cal White B98	2	RSF Attack Academy I B98	0	2016 SCDL FI1 U19	1.27	3.27
2016-09-17	Legends FC B98	3	Real So Cal White B98	2	2016 SCDL FI1 U19	1.23	2.74
2016-09-11	United FC Gold B98	2	Real So Cal White B98	4	2016 SCDL FI1 U19	2.34	3.10
2016-09-04	Real So Cal White B98	4	San Juan SC Lightning Blue B98	2	2016 NHB Cup Flight 1	2.32	1.70
2016-09-04	Real So Cal White B98	1	Sereno White B98	2	2016 NHB Cup Flight 1	1.24	2.53
2016-09-03	CA Rush Nero B98	0	Real So Cal White B98	1	2016 NHB Cup Flight 1	0.74	2.53
2016-09-03	Real So Cal White B98	1	Sparta United Premier B98	0	2016 NHB Cup Flight 1	2.72	1.48